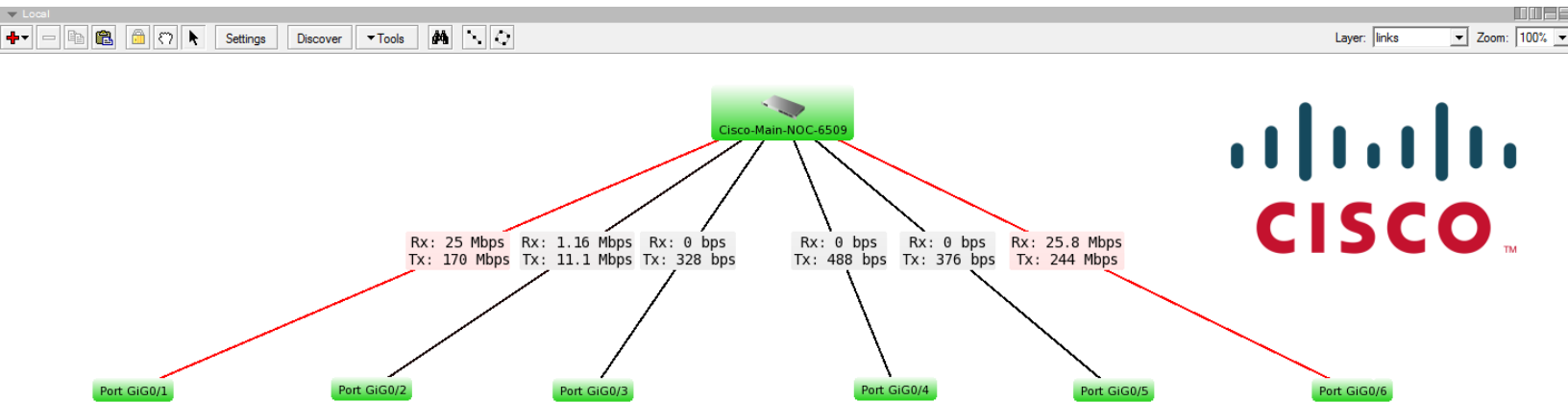
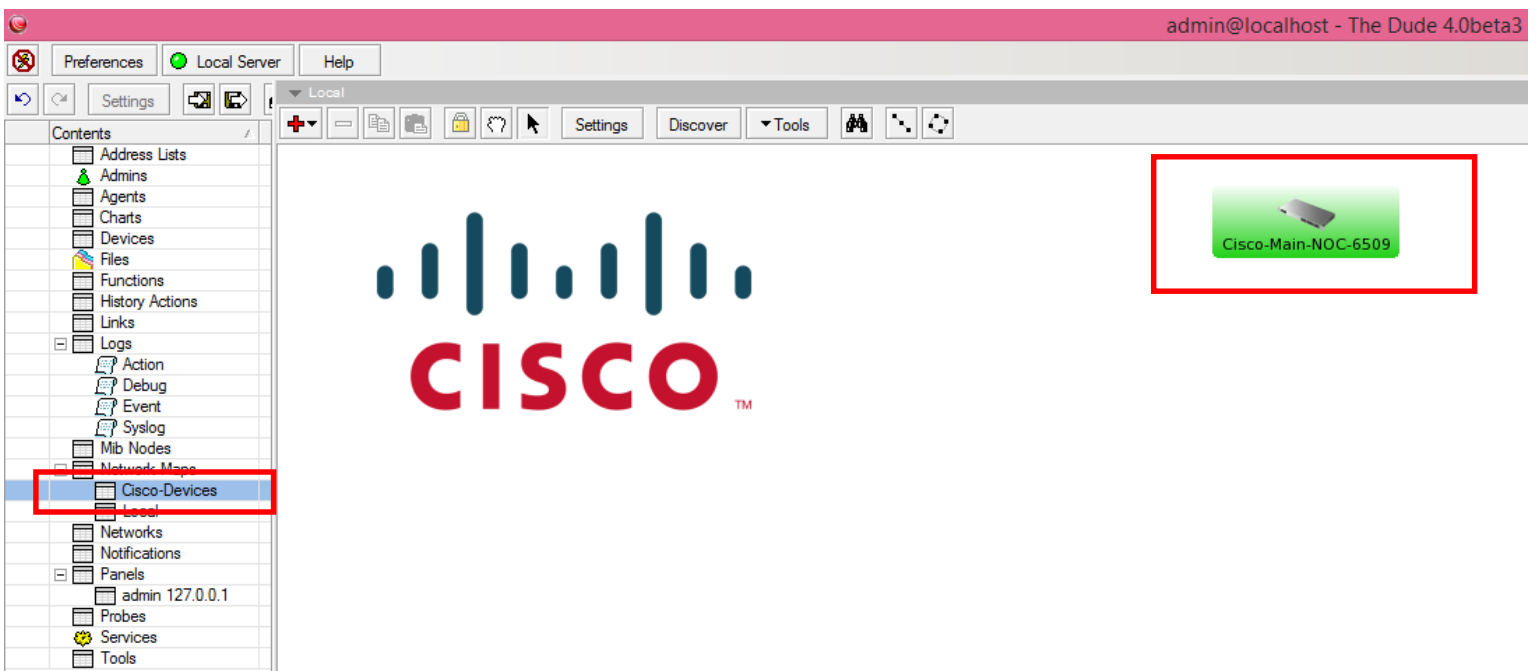


# Monitor Switch Ports Up/Down Status via Mikrotik Dude



- First add your switch in the map so that it can appear in the map as look like below:



- Second Adding PROBE for port monitoring

- Now to add PORTS monitoring, **Open Dude**, Goto **PROBES** and click on + sign to add **new probe**.

Use the following data:

Name = **PORT GiG0/1**

Type = **SNMP**

SNMP Profile = **Your SNMP Profile**

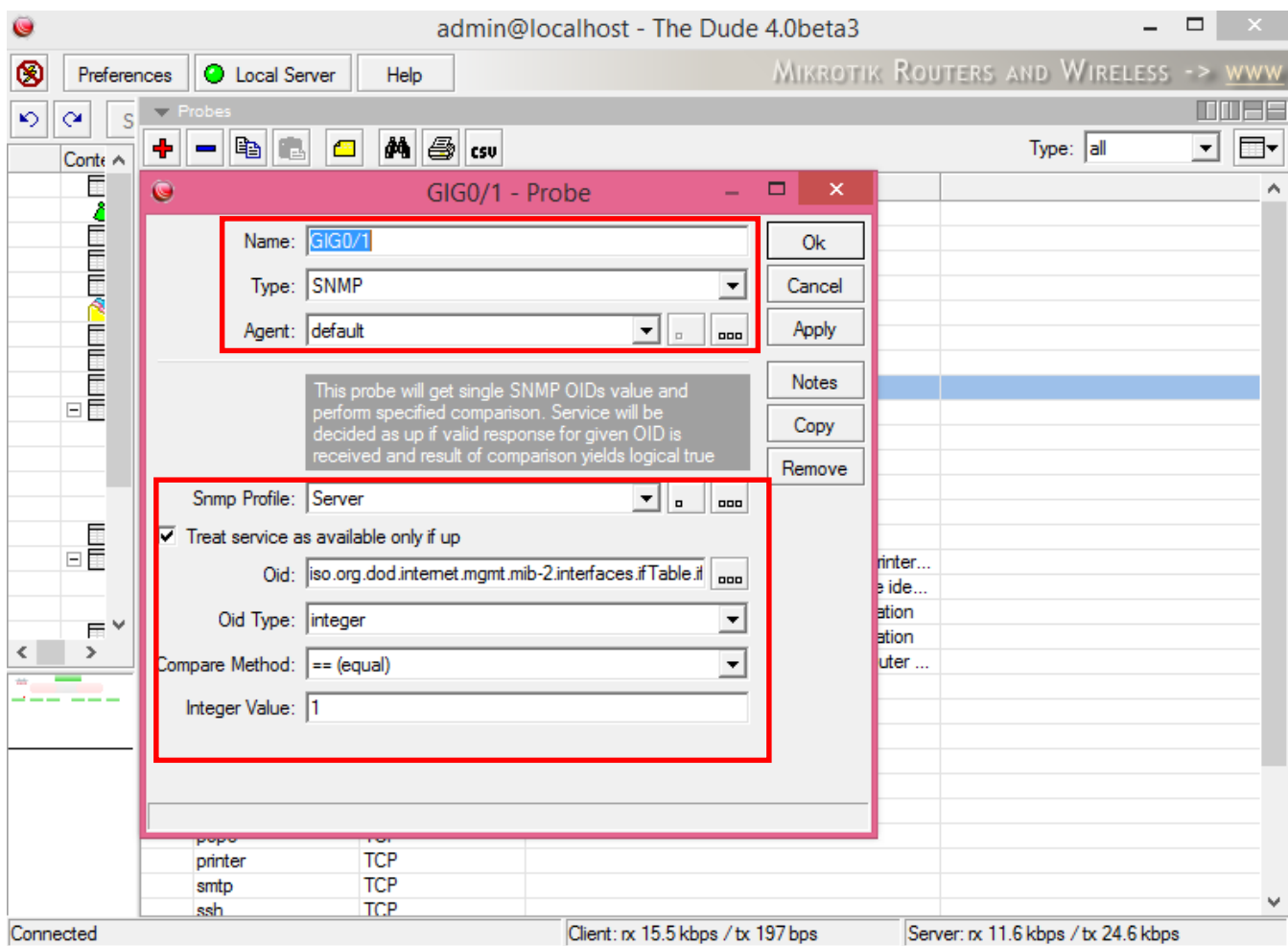
Oid = **iso.org.dod.internet.mgmt.mib-2.interfaces.ifTable.ifEntry.ifOperStatus.10101**

Oid Type = **integer**

Comapre method = **==equal**

Integer Value = **1**

As showed in the image below . . .



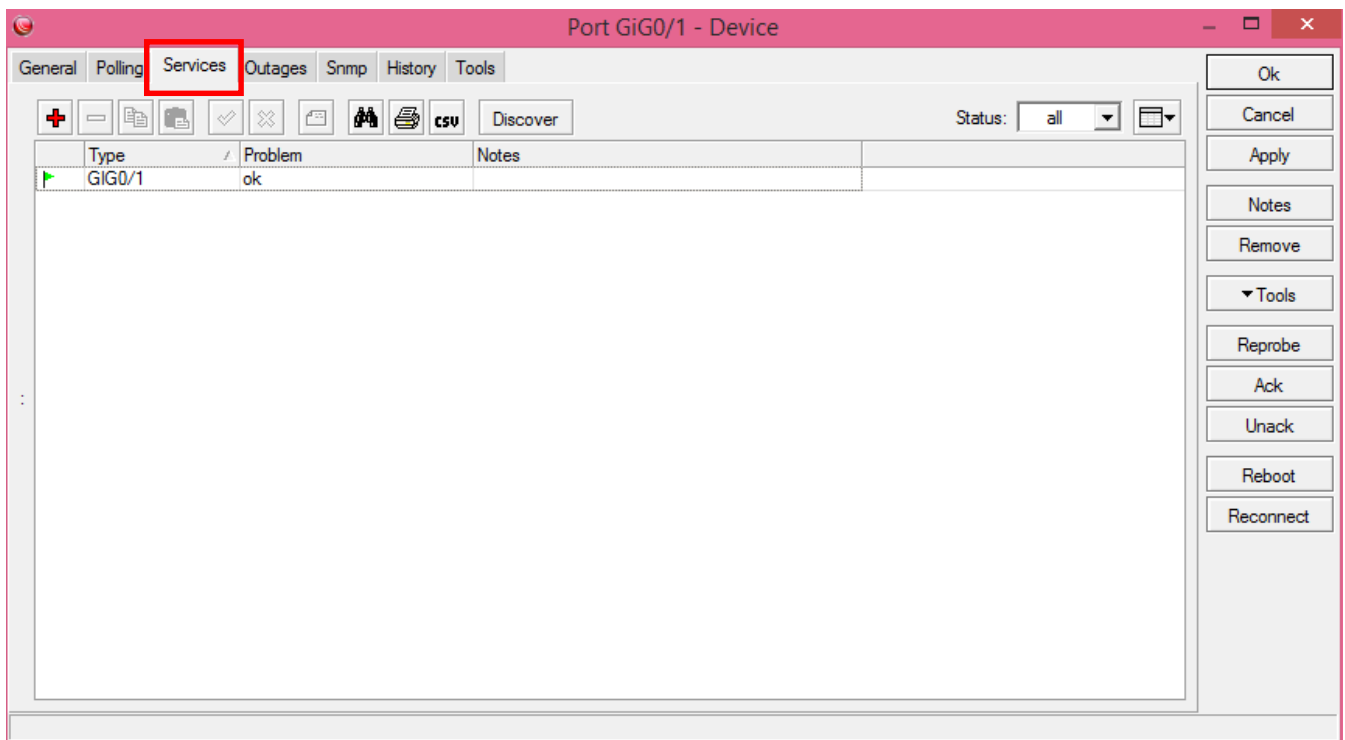
**Note:** Change the OID number to match the port number on your switch , for example I am monitoring port number1 which value is 10101 . You can use SNMPWALK via DUDE to check the OID's for different ports of your switch.

Now click **OK** to save

- Adding Switch PORT separately using IP and PROBE
  - Its time to add PORTs in your map so they can appear separately as showed in the title image:

Go back to your MAP, **Right click** and **ADD** new device, Type your **switch IP address**, and click on **Next**, Now **DO NOT** click on **Discover** , simply click on + sign In **PROBE**, Select the **PORT 9** probe you created earlier and click on Apply/OK

Click on **Finish**.



Now you will see something like below . .



Port GiG0/1

Port GiG0/2

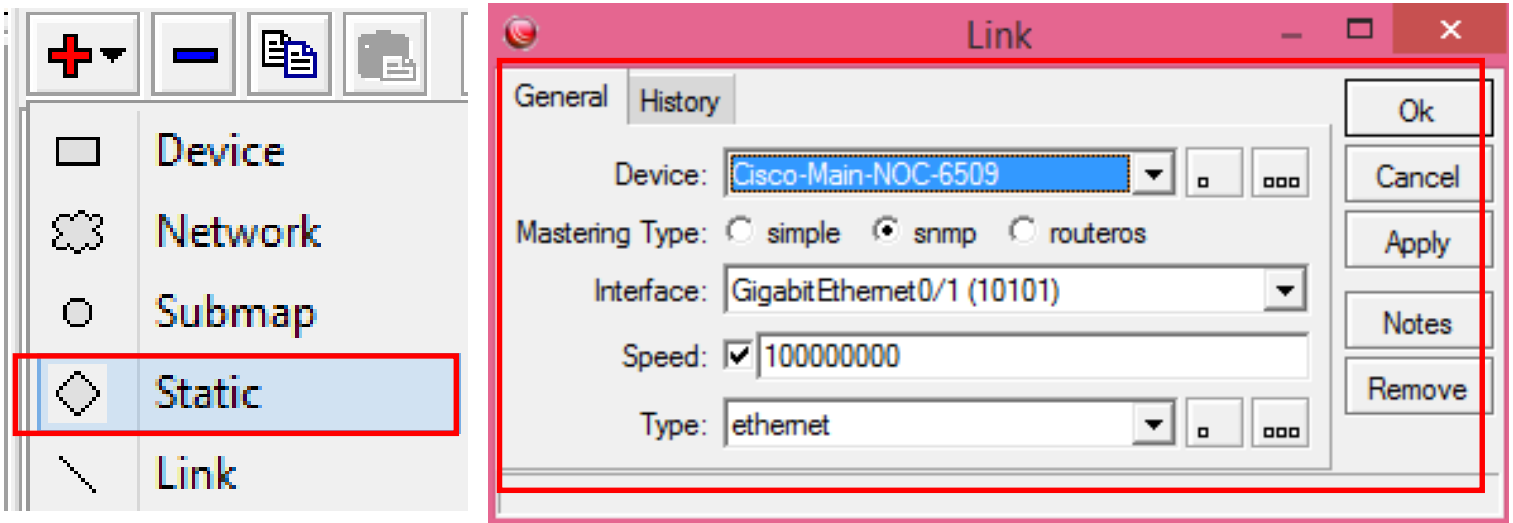
Port GiG0/3

Port GiG0/4

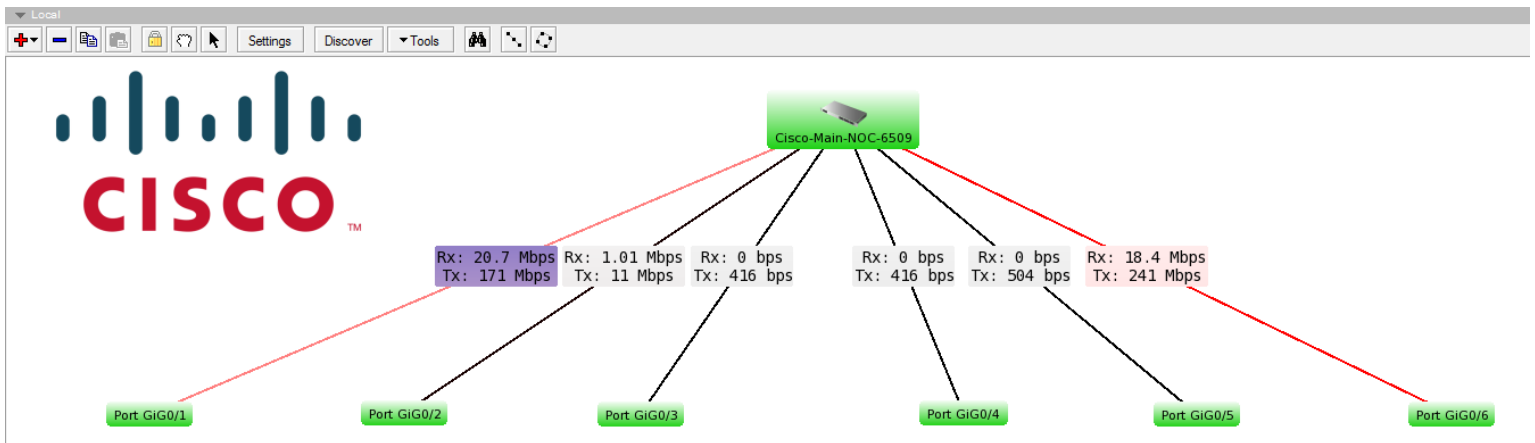
Port GiG0/5

Port GiG0/6

- Adding LINKS to monitor port usage



- The final view like image below:



Source: <https://aacable.wordpress.com/2013/08/20/monitor-switch-ports-updown-status-via-mikrotik-dude-short-notes/>

Best Regards

Haydar